

Shodex
HPLC Columns



Shodex

HPLC Column



立行科技有限公司
Analab Corporation

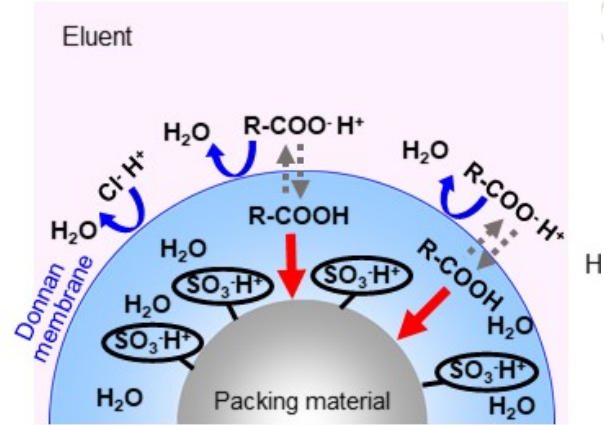
SH-1011 管柱

同時分析醣類以及有機酸 (Ion Exclusion)

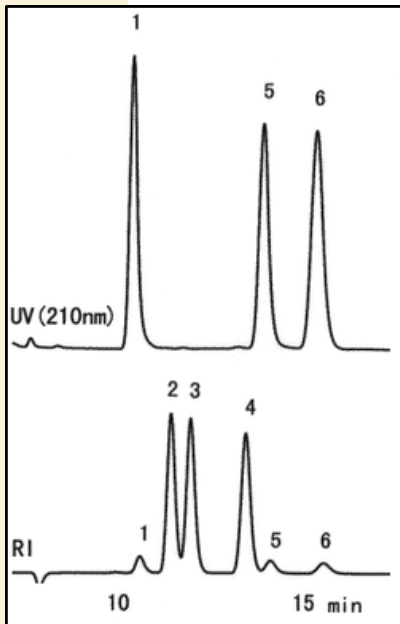
產品特點:

- 適用於 USP-NF L17 & L22。
- 可同時分析醣類以及酸類。
- 適合分析醣醛酸 & 醣醣酸。

應用資料:



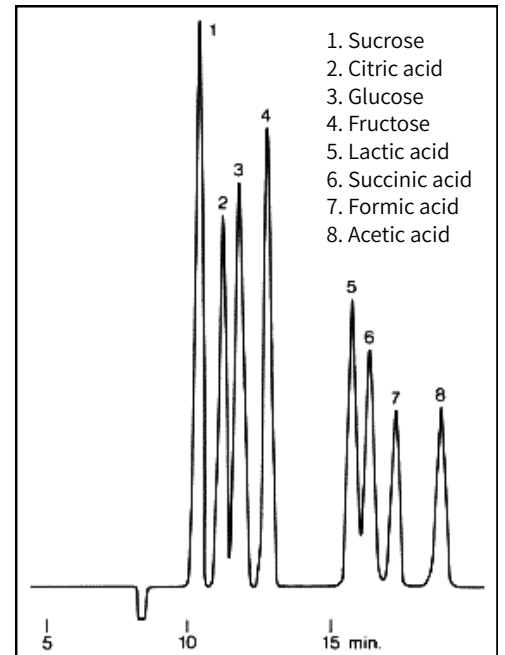
Sugar Chain 組成分析資料



Sample : 10 μ L
1. Sialic acid 0.125 mg/mL
2. Glucose 1.25 mg/mL
3. Mannose 1.25 mg/mL
4. Fucose 1.25 mg/mL
5. N-Acetyl-D-glucosamine 0.125 mg/mL
6. N-Acetyl-D-galactosamine 0.125 mg/mL

Column : Shodex SUGAR SH1011 (8.0 mm I.D. x 300 mm)
Eluent : 5 mM H₂SO₄ aq.
Flow rate : 0.6 mL/min
Detector :
(above); UV (210 nm)
(below); RI
Column temp. : 60 °C

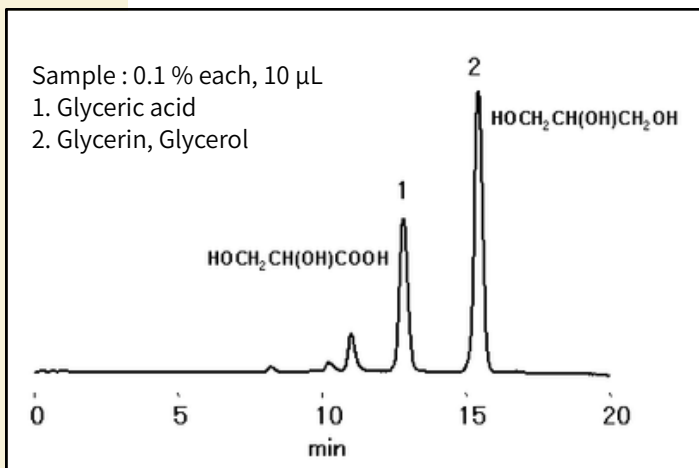
有機酸 & 醣類分析資料



1. Sucrose
2. Citric acid
3. Glucose
4. Fructose
5. Lactic acid
6. Succinic acid
7. Formic acid
8. Acetic acid

Column : Shodex SUGAR SH1011 (8.0 mm I.D. x 300 mm)
Eluent : 3 mM HClO₄ aq.
Flow rate : 1.0 mL/min
Detector : RI
Column temp. : 15 °C

Glycerin and Glyceric Acid 分析資料



Sample : 0.1 % each, 10 μ L
1. Glyceric acid
2. Glycerin, Glycerol

Column : Shodex SUGAR SH1011 (8.0 mm I.D. x 300 mm)
Eluent : 2 mM H₂SO₄ aq.
Flow rate: 0.6 mL/min
Detector : RI
Column temp. : 60 °C

SP-0810管柱

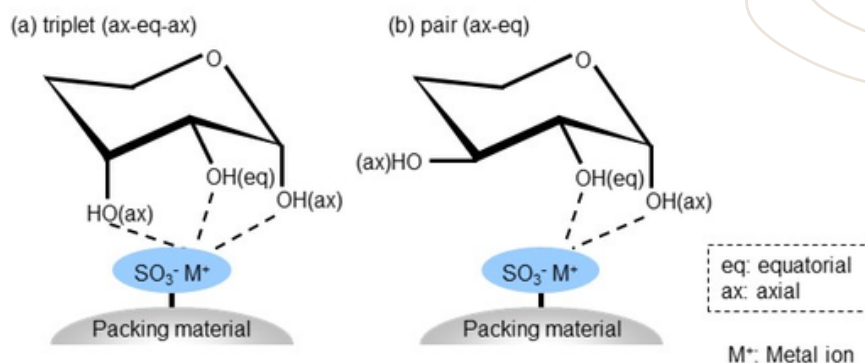
Shodex
HPLC Columns



醣類專用管柱 (Ligand Exchange)

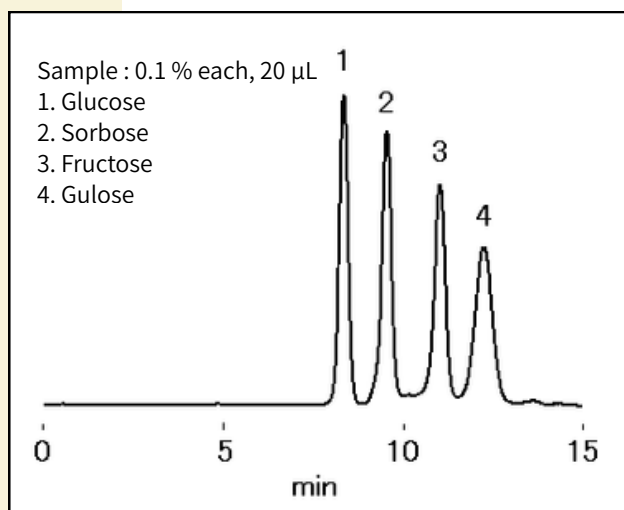
產品特點:

- 適用於 USP-NF L22 & L34。
- 只需用水當移動相。
- 價格公道,品質穩定。



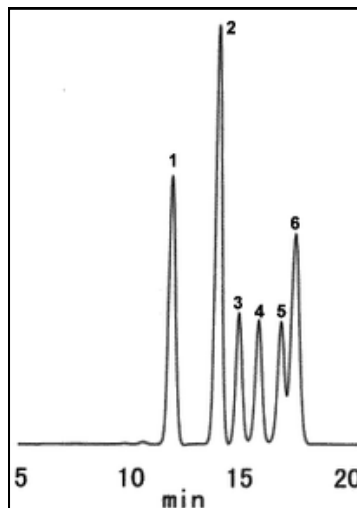
應用資料:

Gulose 分析資料



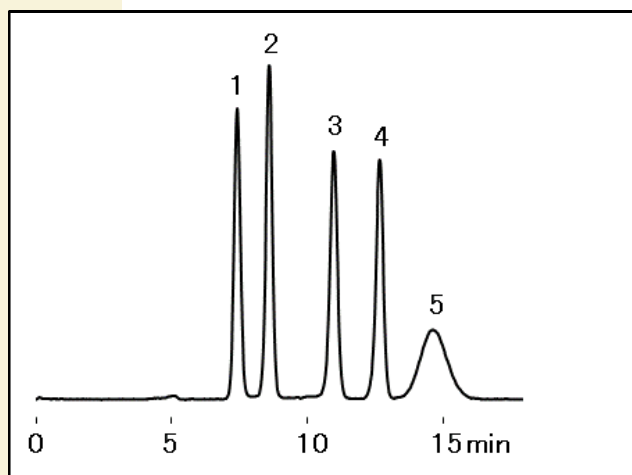
Column : ShodexSUGAR SP0810 (8.0 mm I.D. x 300 mm)
Eluent : H₂O
Flow rate : 1.0 mL/min
Detector : RI
Column temp. : 80 °C

木頭中的醣類分析



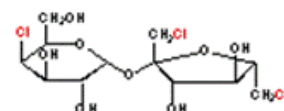
Column : Shodex SUGAR SP0810 (8.0 mm I.D. x 300 mm)
Eluent : H₂O
Flow rate : 0.6 mL/min
Detector : RI
Column temp. : 85 °C

Sucralose 分析資料



Sample : 1 % each, 10 μ L

1. Sucrose
2. Glucose
3. Fructose
4. meso-Erythritol
5. Sucralose



Sucralose

Column : Shodex SUGAR SP0810 (8.0 mm I.D. x 300 mm)
Eluent : H₂O
Flow rate : 1.0 mL/min
Detector : RI
Column temp. : 80 °C

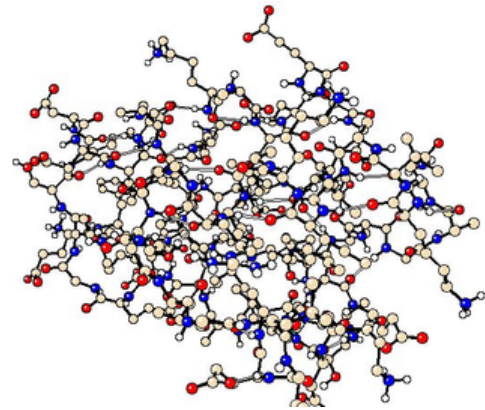
KW-800 管柱



適用於分析蛋白質&酵素

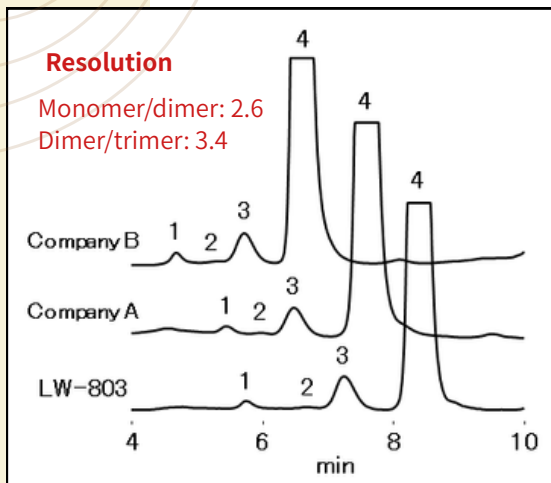
產品特點：

- 適用於 USP-NF L21。
- 規格多樣滿足不同分子量的分析需求。
- 價格公道,品質穩定。



應用資料：

與其他廠牌比較分析IgG的能力

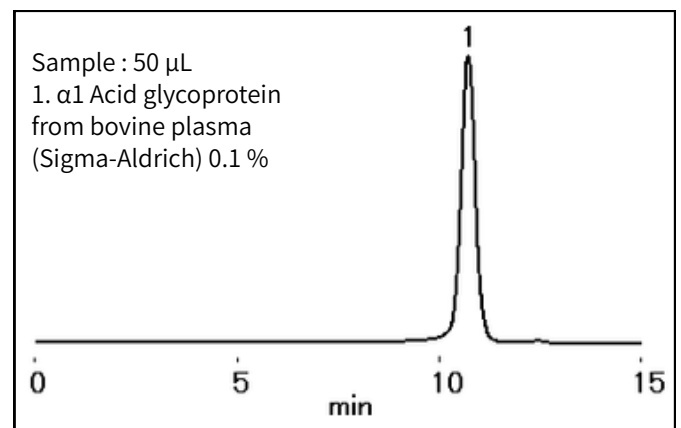


Columns : Shodex PROTEIN LW-803 (8.0 mm I.D. x 300 mm)
Eluent : 50 mM Sodium phosphate buffer (pH7.0) + 0.3 M NaCl
Flow rate : 1.0 mL/min
Detector : UV (280 nm)
Column temp. : Room temp.

Sample : 20 μ L
IgG from recombinant
CHO cell 1 mg/mL

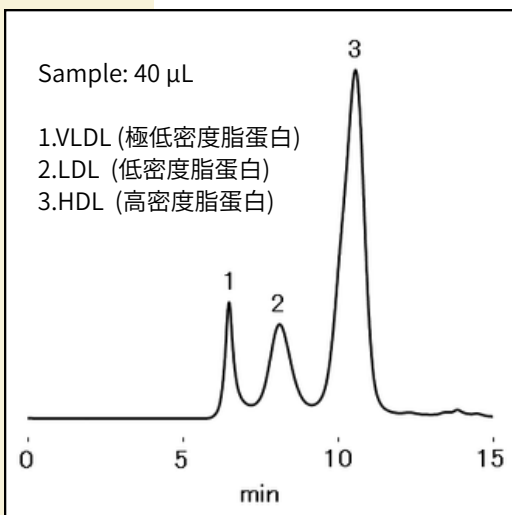
1. Aggregates
2. Trimer
3. Dimer
4. Monomer

α 1-Acid Glycoprotein (AAG) 分析



Column : Shodex PROTEIN KW-804 (8.0 mm I.D. x 300 mm)
Eluent : 100 mM Sodium phosphate buffer (pH7.0) + 0.3 M NaCl
Flow rate : 1.0 mL/min
Detector : UV (254 nm)
Column temp. : 30 $^{\circ}$ C

不同密度脂蛋白的分析



Sample preparation

- Adjust specific gravity of serum of a healthy person to 1.210 g/mL added potassium bromide followed by ultracentrifugation for 24 hours.
- After dialyzing the supernatant, solvent substitute by PBS*.
- Measure protein concentration by Lowry method and dilute with PBS* to 1.0 mg/mL.

Column : + KW-804 (8.0 mm I.D. x 300 mm)
Eluent : 10-fold diluted x10 PBS* with H₂O
(x10 PBS*: 80 g NaCl + 29 g Na₂HPO₄ · 12H₂O + 2 g KCl + 2 g KH₂PO₄ in 1000 mL of H₂O)
Flow rate : 1.0 mL/min
Detector : UV (280 nm)
Column temp. : 30 $^{\circ}$ C